



Energean plc
("Energean" or the "Company")

Athena Gas Discovery

London, 9 May 2022 - Energean plc (LSE: ENOG, TASE: אנרג'ן) is pleased to announce that a commercial gas discovery has been made by the Athena exploration well, offshore Israel.

Highlights

- Commercial discovery made by the Athena exploration well, Block 12, in the A, B and C sands. Preliminary analysis indicates that the Athena discovery contains recoverable gas volumes of 8 bcm (283 bcf / (51 mmboe) on a standalone basis.
- This discovery is particularly significant as it de-risks an additional 50 bcm (1.8 tcf / (321 mmboe) of mean unrisks prospective resources across Energean's Olympus Area (total 58 bcm / 372 mmboe including Athena).
 - The Olympus Area is Energean's newly defined area which includes Athena, plus the undrilled prospects on Block 12 and the adjacent Tanin Lease.
- Athena can be commercialised in the near-term via tie-back to the Energean Power FPSO, enhancing the profitability of the Karish-Tanin development. Alternatively, it could form part of a new Olympus Area development.
- Energean is therefore actively pursuing development options for the commercialisation of the wider Olympus Area, (potentially including Athena), such as:
 - Further domestic Israeli gas sales:
 - New Gas Sales and Purchase Agreements ("GSPA") underpinned by the continued growth of the Israeli power market
 - Spot sales
 - Export options:
 - Developing the Memorandum of Understanding ("MoU") signed with The Egyptian Natural Gas Holding Company ("EGAS") for the supply of up to 3 Bcm/yr into a binding agreement
 - Exports to other regional and European markets via pipeline and LNG via Cyprus and/or Egypt
- The economics of gas produced and sold from Block 12 are not subject to royalties payable to the original sellers of the Karish and Tanin leases, leading to an approximate 8% increase in revenue for the same volumes sold, when compared with the Karish and Tanin discoveries

Mathios Rigas, Chief Executive of Energean, commented:

"We are delighted to announce this new gas discovery at Athena and the potential of the wider Olympus Area. We are considering a range of strategic commercialisation options both for a standalone and wider Olympus Area development, including domestic and multiple export routes."



“This discovery and the broader de-risking of a number of prospects in the Olympus Area reaffirms the role of the East Mediterranean as a global gas exploration hotspot. It strengthens our commitment to provide competition and security of supply to the region, enables the optimisation of our Israel portfolio and fulfils one of our key milestones for 2022.”

Athena Gas Discovery

Athena Well Results

The Athena exploration well was drilled on Block 12 (Energean Israel, 100%), located 20 kilometres from Karish and 20 kilometres from Tanin A, in a water depth of 1,769 metres. It was drilled in 51 days and came in below the budget of \$35 million. The Athena exploration well is the fifth well in a row that has been drilled successfully by Energean in Israel.

A gross hydrocarbon column of 156 metres was encountered in the primary target (the A, B and C sands). Preliminary analysis indicates that the Athena discovery contains recoverable gas volumes of 8 bcm (283 bcf / (51 mmboe) on a standalone basis. Additional analysis will now be undertaken to further refine the full resource potential (including volumes contained within thinner sands between the main reservoir units) and to confirm the liquids content of the discovery.

The Athena well has been suspended as a future production well.

Commercial hydrocarbons were not discovered in the deeper secondary target (22% Probability of Success, D sands).

Multiple Commercialisation Options Under Consideration

Athena can be commercialised in the near-term via tie-back to the Energean Power FPSO, enhancing the profitability of the Karish-Tanin development. Alternatively, it could form part of a new development called the Olympus Area.

Energean’s Olympus Area consists of Block 12 and the prospects on the Tanin lease. The discoveries and prospects in this area lie along the same geological trend and Athena was drilled on the same direct hydrocarbon indicator (shown in the seismic analysis) as Tanin. As such, Energean is confident that the Athena discovery has de-risked the A, B and C sands in the remaining prospects of the Olympus Area, estimated to be 50 bcm (1.8 tcf / (321 mmboe) of mean unrisked prospective resources (total 58 bcm / 372 mmboe including Athena). This estimate excludes the liquids component as well as any gas upside in the thinner sands between the main reservoir units.

Energean has identified multiple commercialisation options for the Athena discovery and potential future Olympus Area development, including both domestic customers and export routes. These options include:

- Further domestic Israeli gas sales:
 - New GSPAs underpinned by the continued growth of the Israeli power market
 - Spot sales (spot contract signed with the Israel Electric Corporation (“IEC”) in March 2022)
- Export options:



- Developing the MoU signed with EGAS into a binding agreement. The MoU was signed in December 2021 for the sale and purchase of up to 3 bcm/yr of natural gas on average for a period of 10 years, commencing with initial volumes of up to 1 bcm/yr.
- Exports to other regional and European markets via pipeline and LNG via Cyprus and/or Egypt

Block 12 (including Athena) benefits from an absence of any seller royalties on production or constraint on export from the lease, improving the economics versus the Karish and Tanin leases.

Remaining Drilling Campaign

The Stena IceMAX has now moved to the Karish Main-04 appraisal well, of which the top hole has already been drilled. The rig will then complete the Karish North development well. A decision on whether to drill the previously communicated optional wells (Hermes and/or Hercules) is expected to be made by the end of Q2 2022.

Enquiries

For capital markets: ir@energean.com

Maria Martin, Head of Corporate Finance

Tel: +44 7917 573 354

For media: pblewer@energean.com

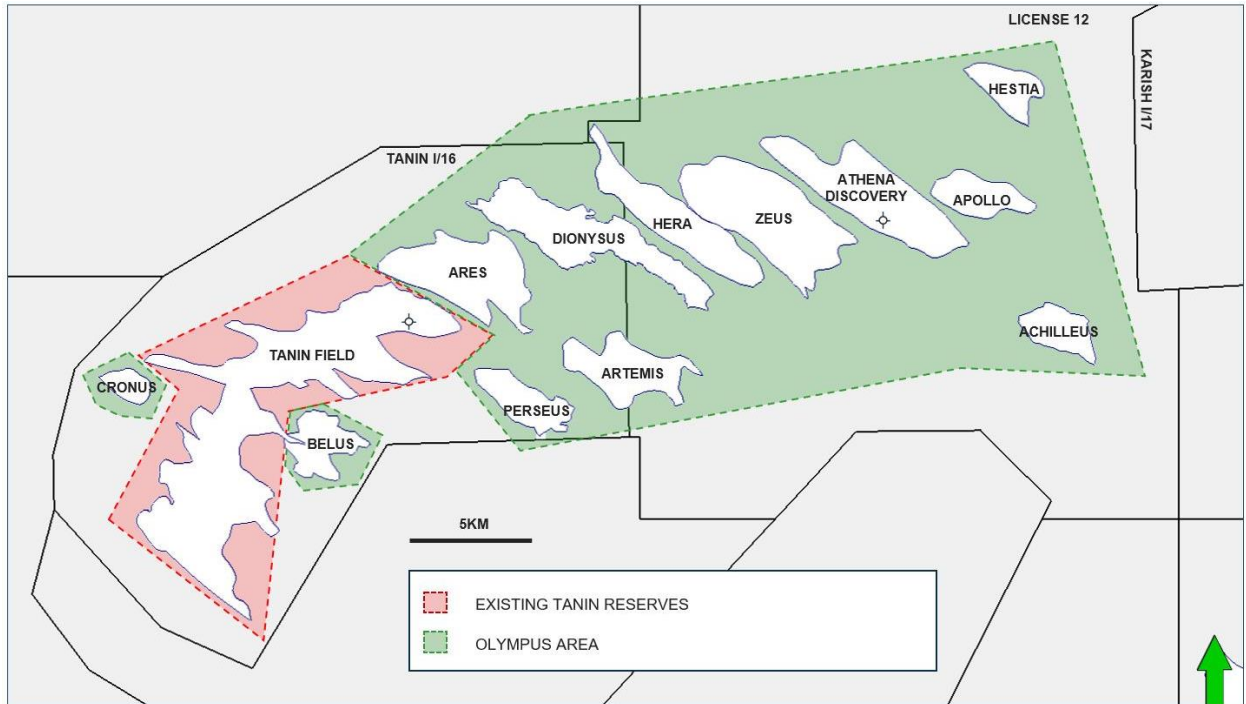
Paddy Blewer, Head of Corporate Communications

Tel: +44 7765 250 857

Forward looking statements

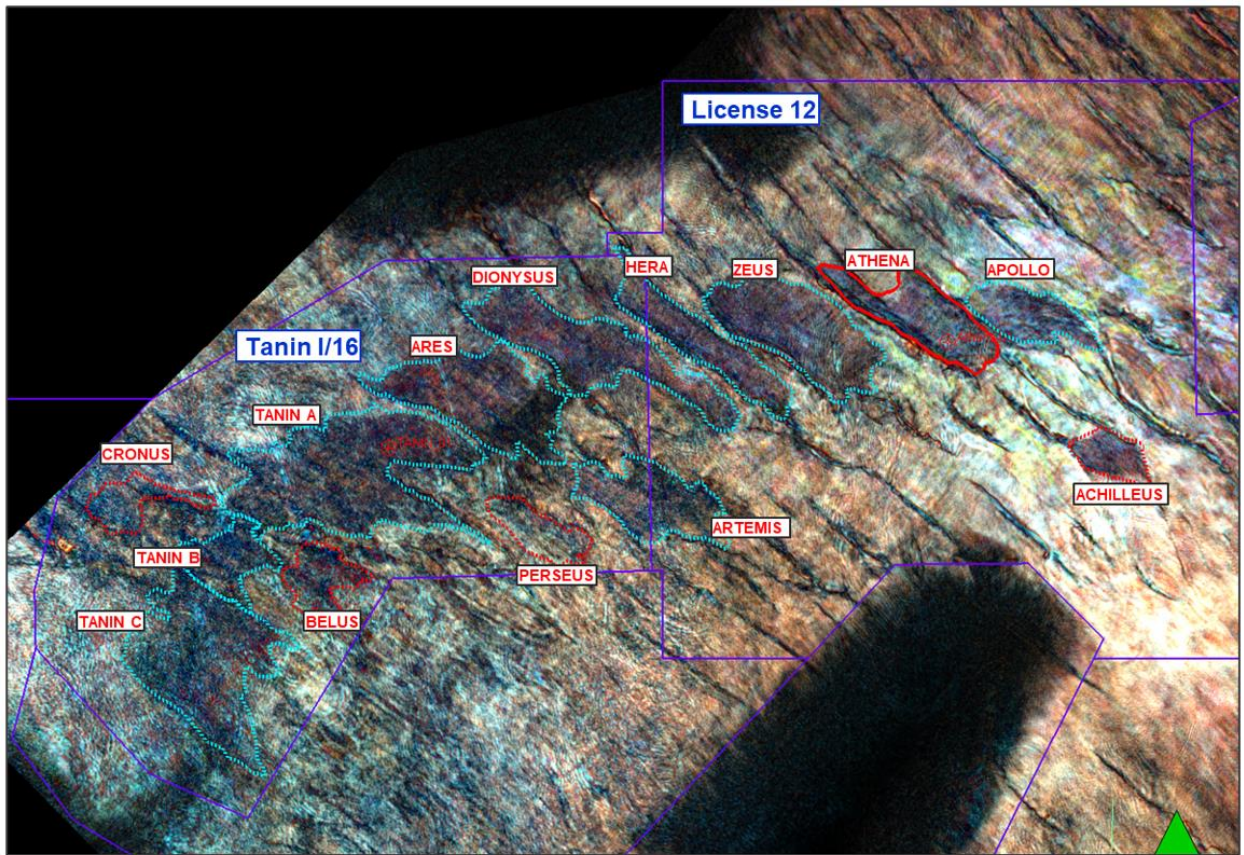
This announcement contains statements that are, or are deemed to be, forward-looking statements. In some instances, forward-looking statements can be identified by the use of terms such as "projects", "forecasts", "on track", "anticipates", "expects", "believes", "intends", "may", "will", or "should" or, in each case, their negative or other variations or comparable terminology. Forward-looking statements are subject to a number of known and unknown risks and uncertainties that may cause actual results and events to differ materially from those expressed in or implied by such forward-looking statements, including, but not limited to: general economic and business conditions; demand for the Company's products and services; competitive factors in the industries in which the Company operates; exchange rate fluctuations; legislative, fiscal and regulatory developments; political risks; terrorism, acts of war and pandemics; changes in law and legal interpretations; and the impact of technological change. Forward-looking statements speak only as of the date of such statements and, except as required by applicable law, the Company undertakes no obligation to update or revise publicly any forward-looking statements, whether as a result of new information, future events or otherwise. The information contained in this announcement is subject to change without notice.

Figure 1 – Olympus Area map



Source: Energean

Figure 2 – Olympus Area Direct Hydrocarbon Indicator



Source: Energean