



# A Brief Look at EGYPT'S PETROLEUM EXPORTS OVER FYS 2019/20 & 2020/21

BY JOLLY MONSEF, REHAM GAMAL & YOUSTINA MOUNIR

**D**ue to the spread of Covid-19 pandemic in late 2019 and the lock down, the global economy and financial markets have been severely affected. Overall, the global demand has been negatively affected; accordingly, the exports have decreased compared with the exports in the year before the pandemic.

## PETROLEUM EXPORTS VALUE OVER FYS 2019/20 & 2020/21

PETROLEUM EXPORTS BY COMMODITY (\$ billion)

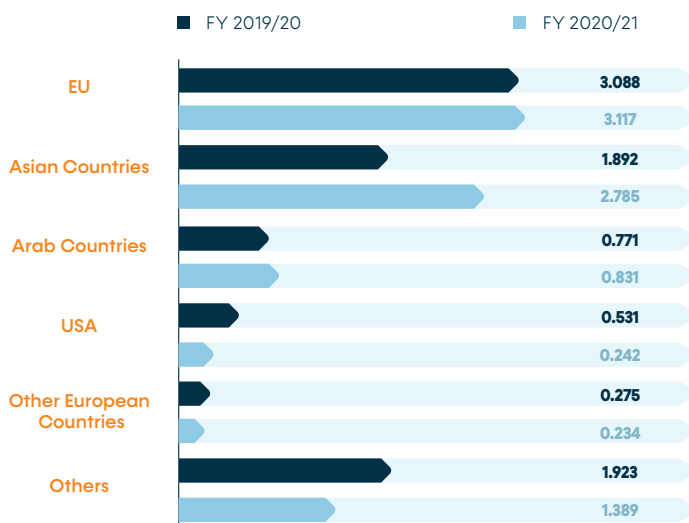
	FY 2019/20	FY 2020/21
Crude Oil	3.245	2.678
Oil Products*	5.235	5.919

\*Including natural gas, bunker and jet fuel.

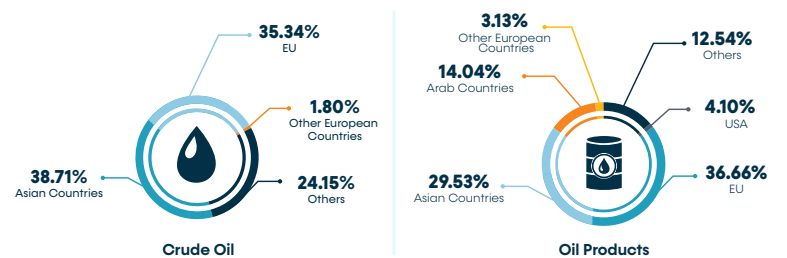
TOTAL PETROLEUM EXPORTS

FY	Value (\$ billion)	Share of Petroleum Exports from Total Exports (%)
2019/20	8.480	32
2020/21	8.597	30

PETROLEUM EXPORTS BY GEOGRAPHICAL DISTRIBUTION (\$ billion)



PETROLEUM EXPORTS SHARES BY COMMODITY & GEOGRAPHICAL DISTRIBUTION IN FY 2020/21 (%)



OIL INDUSTRIAL EXPORTS FROM FREE ZONES TO THE REST OF THE WORLD



## MAIN EXPORTING CHANNELS & TERMINALS

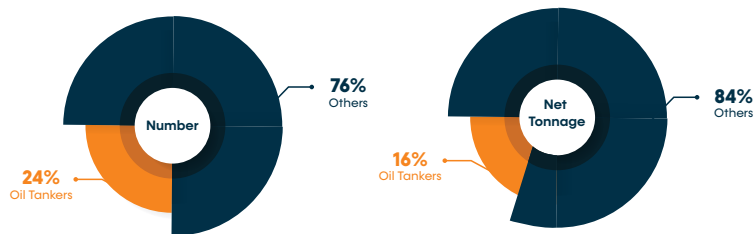
### 1. EXPORTING CHANNELS

#### TRAFFIC IN THE SUEZ CANAL

##### OIL TANKERS STATISTICS

FY	Number	Net Tonnage (mmt)
2019/20	5,405	253.5
2020/21	4,603	195

##### SHARE OF TANKERS IN FY 2020/21



### 2. PETROLEUM TERMINALS

**12** Major Terminals for Petroleum Trading



#### LNG TERMINALS

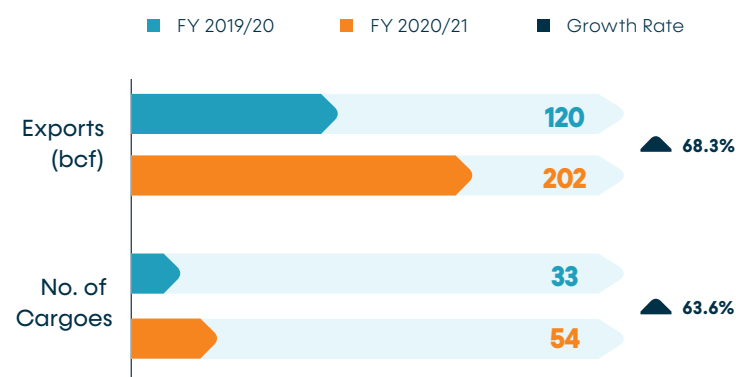
Facility	Location	Operating Year
SEGAS	Damietta	2004
Idku Facility	Idku	2001



Total Production Capacity of **12** mmt/y Idku & Damietta Plants

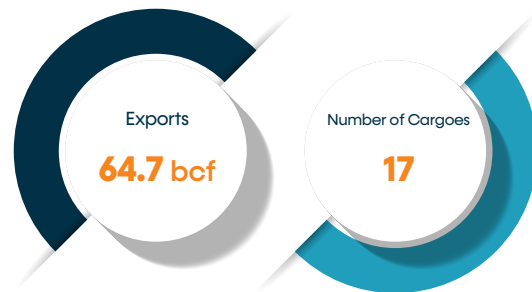
### PETROLEUM EXPORTS VOLUME OVER FYS 2019/20 & 2020/21

#### LNG EXPORTS FROM IDKU PLANT



Damietta plant's operation resumed in January 2021 after an 8-year pause, while the LNG exports resumed was in February 2021.

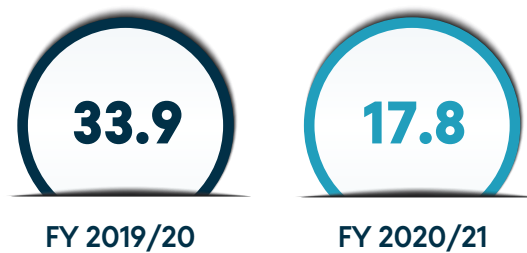
#### LNG EXPORTS FROM DAMIETTA PLANT IN FEB 2021



#### LNG EXPORTS FROM DAMIETTA & IDKU PLANTS IN FY 2020/21



#### NATURAL GAS EXPORTS TO JORDAN THROUGH THE ARAB GAS PIPELINE (bcf)



#### PETROLEUM PRODUCTS EXPORTS THROUGH GOUNA PETROLEUM BASIN IN FY 2020/21\*(mmt)

2	Mazut
0.4	Turbine
0.2	Propane
0.08	Naphtha
0.04	Others

\*One of the Largest Petroleum Basins in Egypt